

MARTINIQUE AT ABACOA REPLAT OF LOTS 440, 442, 443, 446, 454, 455, TRACTS 'WMT1', 'WMT2', 'WMT3', 'OS8' AND 'OS9'

BEING A REPLAT OF LOTS 440, 442, 443, 446, 454, 455, TRACTS "WMT1", "WMT2", "WMT3", "OS8" AND "OS9"
ACCORDING TO MARTINIQUE AT ABACOA - PLAT ONE AS RECORDED IN PLAT BOOK 103, PAGES 47 THROUGH 56,
OF THE PUBLIC RECORDS OF PALM BEACH COUNTY, FLORIDA, LYING IN
SECTION 14, TOWNSHIP 41 SOUTH, RANGE 42 EAST,
TOWN OF JUPITER, PALM BEACH COUNTY, FLORIDA
SHEET 4 OF 5 MAY, 2005

EGRET LANDING AT JUPITER, A P.U.D.
PLAT BOOK 71, PAGES 33 - 48

26' ACCESS & MAINTENANCE EASEMENT
(PER O.R.B. 10060, PG. 99)
12' U.E. (PER O.R.B. 5546, PG. 1471)
6' U.E. (PER O.R.B. 10060, PG. 1018)

LESLIE STREET

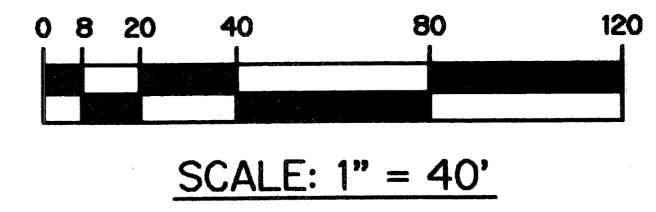
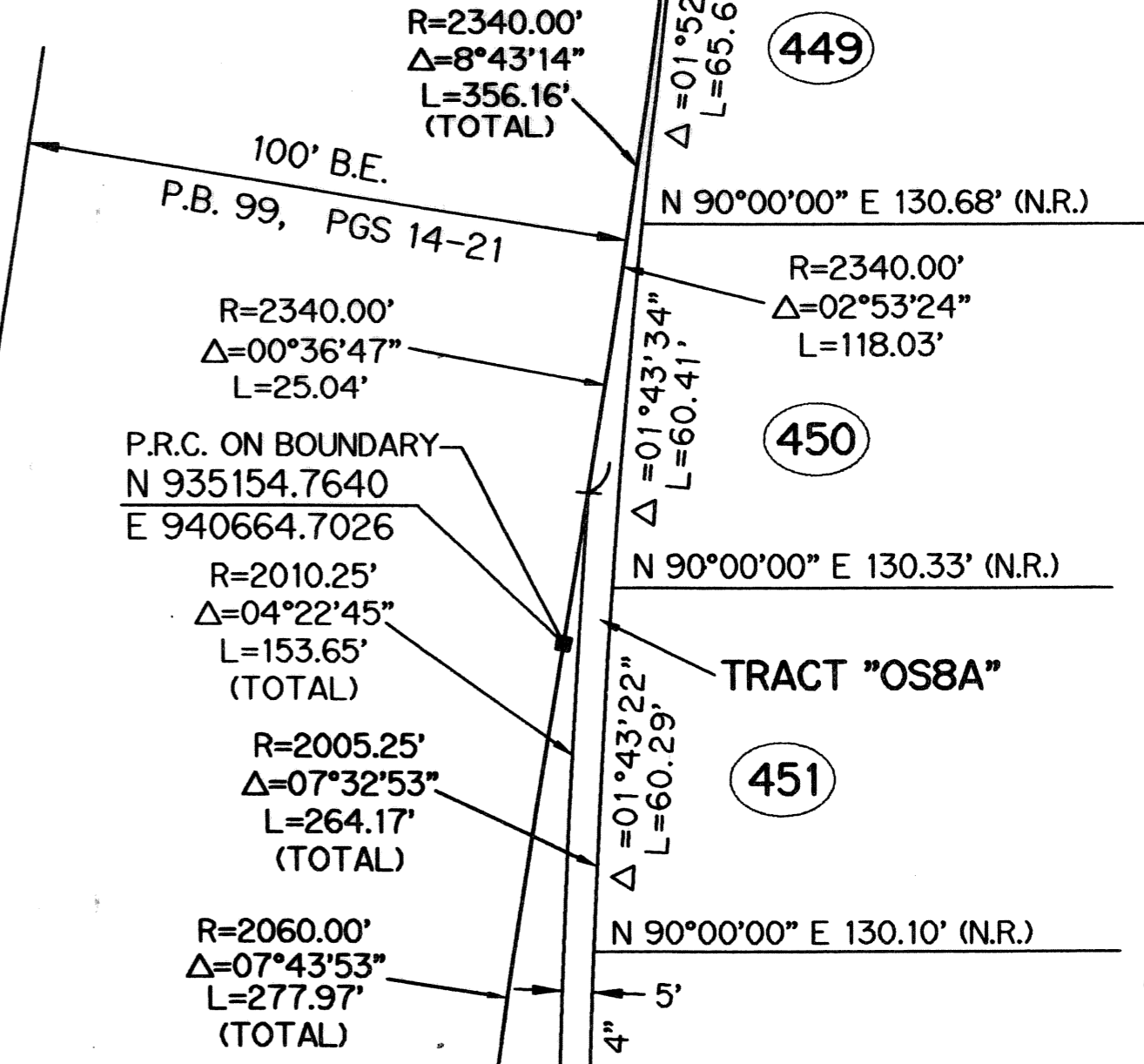
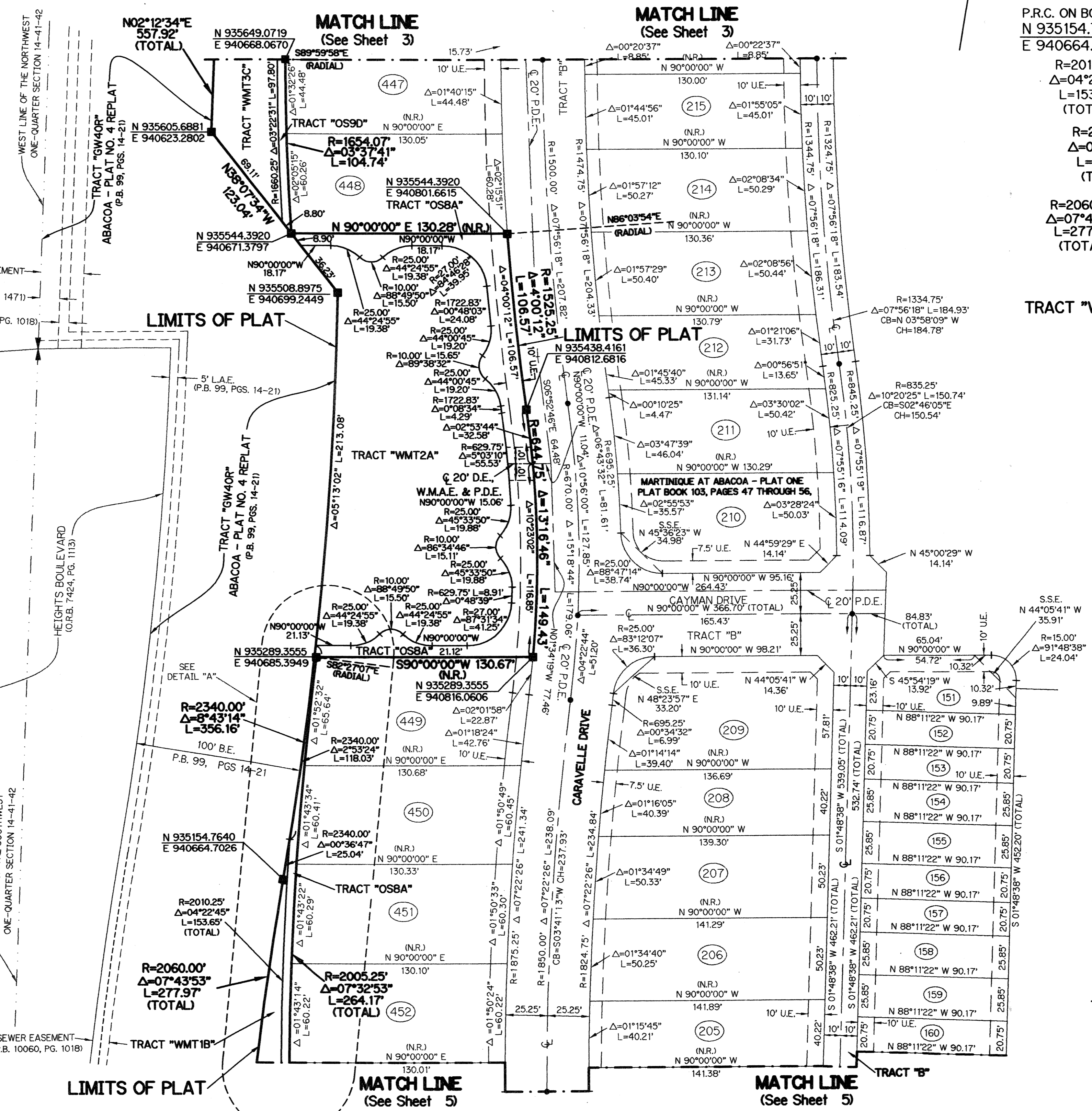
NORTH PALM
BEACH HEIGHTS

ROBINSON STREET

WEST LINE OF THE NORTHWEST
ONE-QUARTER SECTION 14-41-42

10' SEWER EASEMENT
(PER O.R.B. 10060, PG. 1018)

THIS INSTRUMENT PREPARED BY
DAVID L. SMITH, P.S.M. LS-4951, STATE OF FLORIDA
LAWSON, NOBLE AND WEBB, INC.
ENGINEERS PLANNERS SURVEYORS
420 COLUMBIA DRIVE, SUITE 110
WEST PALM BEACH, FLORIDA 33409
LB 6674



- LEGEND:**
- - SET PERMANENT CONTROL POINT, LB #6674
 - - SET PARKER KALON NAIL AND P.R.M. DISK LB #6674
 - - SET PERMANENT REFERENCE MONUMENT, LB #6674
 - - FOUND P.R.M. #26
 - Δ - DELTA ANGLE
 - B.E. - BUFFER EASEMENT
 - CB - CENTERLINE
 - CB - CHORD BEARING
 - CH - CHORD DISTANCE
 - D.B. - DEED BOOK
 - D.E. - DRAINAGE EASEMENT
 - I.E. - INGRESS AND EGRESS EASEMENT
 - L - ARC LENGTH
 - L.A.E. - LIMITED ACCESS EASEMENT
 - N.T.S. - NOT TO SCALE
 - NPBCID - NORTHERN PALM BEACH COUNTY IMPROVEMENT DISTRICT
 - (NR) - NON-RADIAL
 - O.R.B. - OFFICIAL RECORD BOOK
 - P.R.C. - POINT OF REVERSE CURVATURE
 - P.R.M. - PERMANENT REFERENCE MONUMENT
 - P.A.E. - PEDESTRIAN ACCESS EASEMENT
 - P.B. - PLAT BOOK
 - P.D.E. - PUBLIC DRAINAGE EASEMENT
 - PGS. - PAGES
 - P.I. - POINT OF INTERSECTION
 - (RAD) - RADIAL
 - R - RADIUS
 - (R.F.) - RADIAL TO FRONT LOT LINE
 - (R.R.) - RADIAL TO REAR LOT LINE
 - S.E. - SIDEWALK EASEMENT
 - S.S.E. - SAFE SIGHT EASEMENT
 - S.T. - SURVEY TIE
 - U.E. - UTILITY EASEMENT
 - W.M.E. - WATER MANAGEMENT EASEMENT
 - N 931379.1119
E 785294.7754 - DENOTES STATE PLANE COORDINATES

NOTE:
COORDINATES SHOWN ARE GRID COORDINATES
DATUM = NAD 83 (1989 ADJUSTMENT)
ZONE = FLORIDA EAST ZONE
LINEAR UNIT = U.S. SURVEY FEET
COORDINATE SYSTEM 1983 STATE PLANE
TRANSVERSE MERCATOR PROJECTION
ALL DISTANCES ARE GROUND
SCALE FACTOR = 1.000077
S 02°12'00\"/>

